



WOWConnect

Words of Wisdom Christian Academy

Information for Parents, Students and Teachers

WOWCA HAS A RECOGNIZED STATUS IN ALL LEVELS AND IS AN ESC-CERTIFIED SCHOOL

Dear Parents and Students,

We trust you are all well amid the situation caused by the pandemic. We want you to know that you are always in our prayers. Praise be to God who is our Savior and Help in times of trouble!

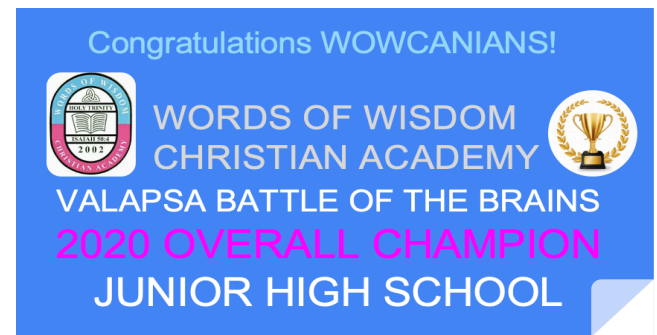
Here at WOWCA, we have been working hard to ensure that we are ready to deliver a great learning experience to our students considering the limitations within which we have to work.

THE MODE OF LEARNING AT WOWCA DURING SY 2020-2021

In accordance with government requirements, WOWCA will operate the school for SY 2020-2021 using a combination of the following modes:

- **Online distance learning**
- **Modular distance learning**

Flexibility is encouraged depending on the need during every week. The above plan is to avoid face-to-face class meetings in accordance with government requirements as a safety measure to protect our students, teachers, non-teaching staff and parents.



*WOWCA was overall champion
in the JHS category*

Modes of Distance Learning



Credit: Flaticon

WHAT WILL IT LOOK LIKE AS WE START THIS SCHOOL YEAR?

Our goals:

- Delivery of instruction, assessment and reporting
- Student engagement
- Home-school collaboration
- Teacher support

Online distance learning will be delivered using online platforms:

1. SeeSaw (Kindergarten and Grades 1-3)



2. Google Classroom (Grades 4 – 12)



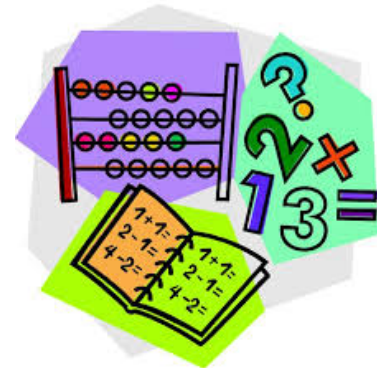
Online Distance Learning



E-LEARNING

Credit: myconnecticutkids.com

Modular Distance Learning



Credit: cliparting.com

3. Other online platforms



**Continuous Training for
TEACHERS
this July and August 2020**



Credit: Google for Education

**Upcoming for PARENTS
this July and August 2020**

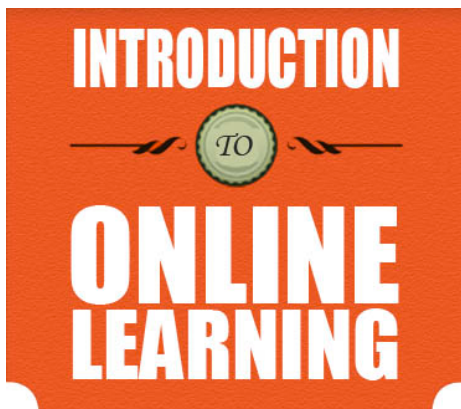
**To be Announced Soon
at our FB Page**



Credit: Clipart Library

**Upcoming for STUDENTS
this August 2020**

**To be Announced Soon
at our FB Page**



Credit: CSUF

**Enrollment Registration Form
SY 2020-2021**

Click the link to register your child

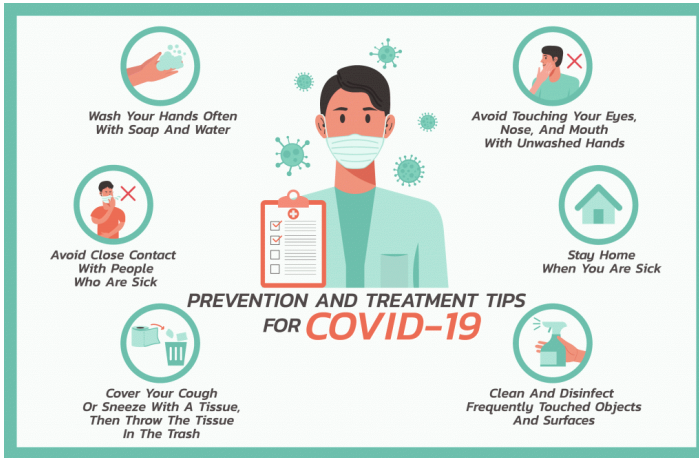
<https://forms.gle/URvmHtfUbSXR82688>

For new incoming students, you may need to email your child's initial requirements:

- 2x2 picture (white background)
- PSA birth certificate and a recent Report Card (if available)

to wowca.reg.infosys@gmail.com. We will find ways to make it convenient to you.

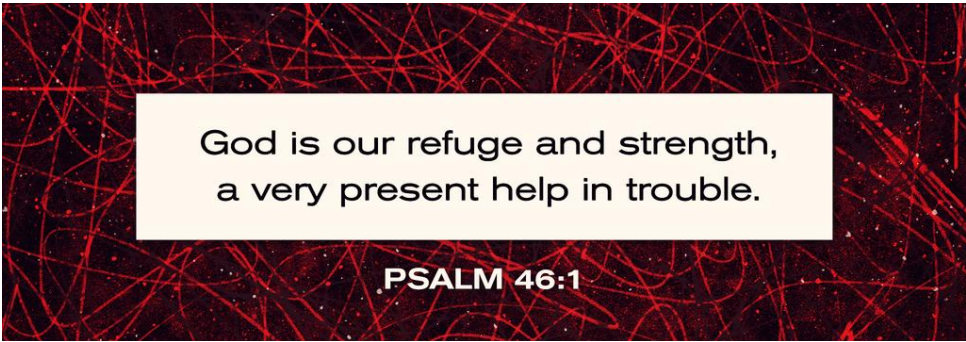
No Increase in Tuition Fees



**WOWCA ENROLLMENT SY 2020-2021
OFFLINE AND ONLINE PAYMENT**

OFFLINE PAYMENT	ONLINE PAYMENT
PAYMENT IS MADE THROUGH THE CASHIER'S OFFICE AT WOWCA	PAYMENT IS MADE THROUGH A DESIGNATED BANK
BY APPOINTMENT WITHIN OFFICE HOURS INDICATED BELOW - DAYS: MONDAY, WEDNESDAY AND FRIDAY TIME: 9:00 AM – 4:00 PM	BANK DETAILS WILL BE PROVIDED ON REQUEST. PLEASE MESSAGE US VIA OUR FB PAGE, MESSENGER ACCOUNT OR EMAIL.

SOMETHING NEW IS ON ITS WAY SOON
WAIT FOR THE NEXT ANNOUNCEMENT



Credit: Faithlife

Grace and peace,

Edith Bhojwani
Vice President – Operations